



FULLY FITTED
& READY TO GO

FORUM.**PLUS**

PLUS FURNITURE
PLUS FIBRE
PLUS FLEXIBILITY

Office Space 9,117 Sq Ft



PLUS SPECIFICATION



**9,117 Sq Ft
Furnished
office space**



**39 car
parking
spaces**



**On-site
cycle
racks**



**Dedicated
fibre lease
line**



**75
workstations**



**WCs &
showers on
each floor**



**Full
on-site
CCTV**



**On-site cafe
and visiting
food trucks**



**Boot camp,
Pilates and
yoga**



PLUS LOCATION

Forum provides the very best office space on Solent Business Park, the most established office park on the South Coast. The M27 upgrade to a smart motorway, coupled with major infrastructure improvements to junction 9 and the immediate road network serving the park, together with the completion of new link roads beyond Whiteley town centre, will significantly improve road access. On-site Forum offers a peaceful lakeside setting with a variety of amenities including a cafe.

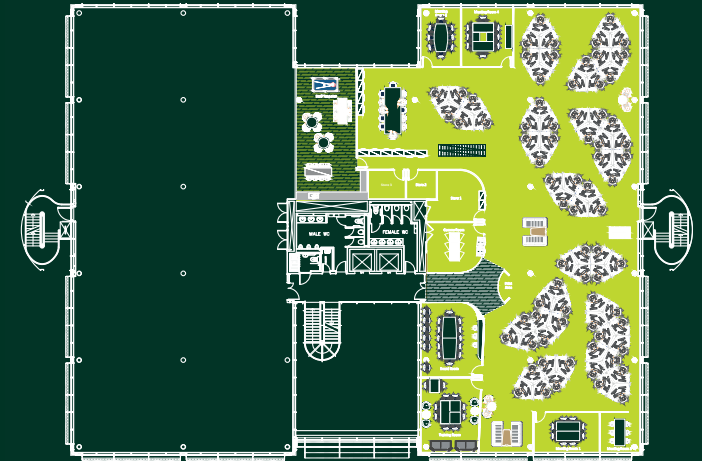


PLUS FIBRE

As well as being fully data cabled Forum.Plus also offers a 100/1000Mbps dedicated Virgin fibre lease line, ready to go.

PLUS FLEXIBILITY

The part 1st floor of Forum 4 offers 9,117 Sq Ft of fully fitted space, ready for occupation. As well as providing 75 workstations, the suite also provides a large kitchen/breakout room, 12 person board room and 6 additional small meeting rooms.



**ALCHEMY
ASSET
MANAGEMENT**

theforumsolent.co.uk/plus

Nik Cox
ncox@vailwilliams.com



Steve Williams
steven.williams@realest.uk.com

